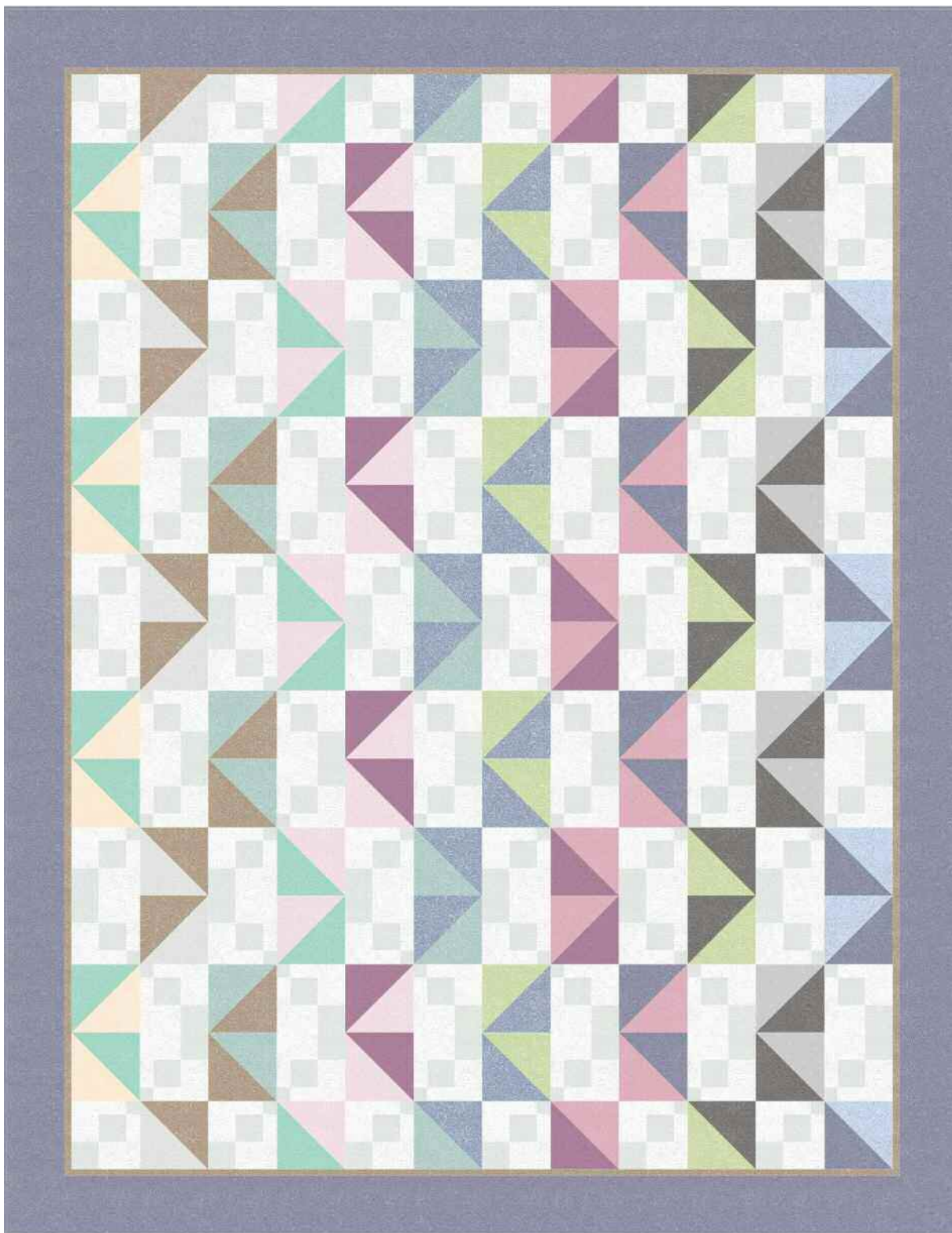


dear STELLA

Rae Ritchie Chroma Basics
"Beyond Labadee" by Raija Salomaa



70"x90"

483 Broadway, New York, NY 10013
www.dearstelladesign.com



Pattern available from
www.quilterst treasurechest.com

dear STELLA

Rae Ritchie Chroma Basics
"Beyond Labadee" by Raija Salomaa

Yardage requirements:

1 1/8 yds:
Stella-SRR512-Seafoam

1 7/8 yds:
Stella-SRR512-Whisper

2 1/4 yds (includes binding):
Stella-SRR512-Marina

5/8 yd:
Stella-SRR512-Mink

1/4 yd each:
Stella-SRR512-Nickel
Stella-SRR512-Eggshell
Stella-SRR613-Pebble
Stella-SRR512-Azure

3/8 yd each:
Stella-SRR512-Opal
Stella-SRR512-Mist
Stella-SRR512-Lavender
Stella-SRR512-Powder
Stella-SRR512-Purple
Stella-SRR512-Celery
Stella-SRR512-Lilac
Stella-SRR512-Storm

5 1/2 yds backing of your choice

