

# dear STELLA

Eloise is shown in Dear Stella "Stella Dot" and "Ikat" fabrics, available online and in select sewing and quilting shops worldwide. Ask your local shop owners to stock Dear Stella fabrics!



## Eloise

### elephant pillow

This pretty pachyderm, created with Dear Stella fabrics, looks great whether she's lounging on a bed, club chair, crib or couch. As shown here, she measures approximately 13" x 13" x 2".

[www.dearstelladesign.com](http://www.dearstelladesign.com)

DESIGNED BY  
MARGARET CRONIN  
CECIL & CLYDE

[www.etsy.com/shop/CecilClyde](http://www.etsy.com/shop/CecilClyde)



This pattern is owned and licensed by Dear Stella for personal use only and should not be reproduced for sale to any third party. This license ends October 1, 2012 and the pattern may not be used or reproduced for any purpose after that date.

# ELOISE ELEPHANT PILLOW

## What You'll Need

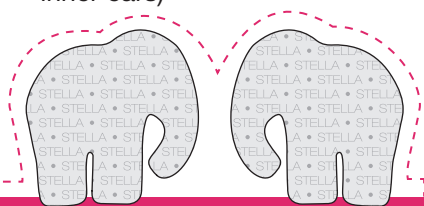
- 1/2 yard print fabric\* for body and inner ears
- 1/2 yard coordinating fabric\* for gusset and outer ears
- 5 yards bias piping in a coordinating color
- Polyester fiberfill (10 oz. or more)
- Thread

\*Yardage is based on 44/45" quilting-weight cotton fabric with at least 42" of useable width.

**Note:** All seam allowances are 1/4".

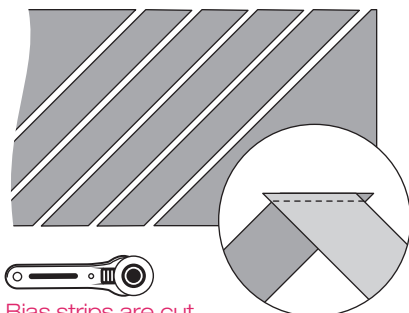
## Cutting

- From the print fabric, cut:
  - 2 elephant bodies and 2 ears (for inner ears)



**Note:** If you're using a directional print, be certain the motifs are right-side-up and that Eloise has a left and right side.

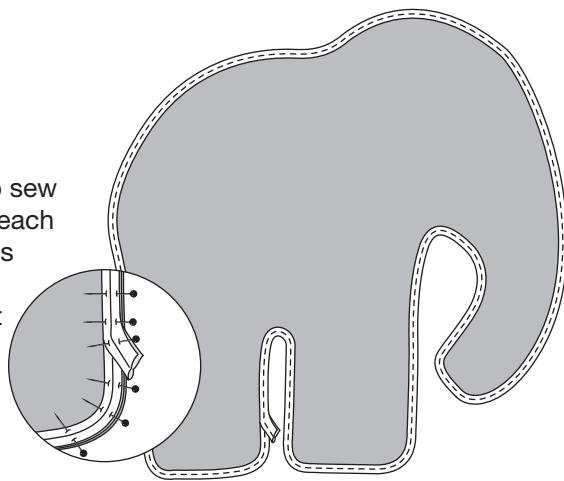
- From the coordinating fabric, cut:
  - 2 ears (for outer ears)
  - Three or four 2 3/4"-wide bias strips to seam together to create one continuous strip measuring 2 3/4" x 70".



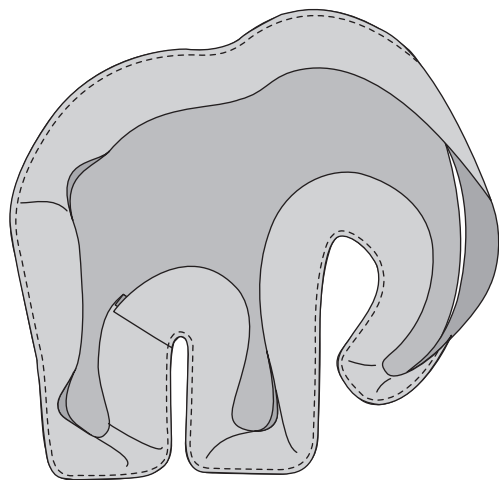
Bias strips are cut at a 45° angle to the straight fabric grain. Place strips right sides together, perpendicular to each other, then stitch across the angled end. Press the seam open to reduce bulk.

## Assembly

1 Use a piping or zipper foot to sew piping around the perimeter of each body piece. Keep the raw edges aligned and stitch close to the piping cord. Begin the piping at the inner back leg corner and when you come back to that point, extend the piping into the seamline.

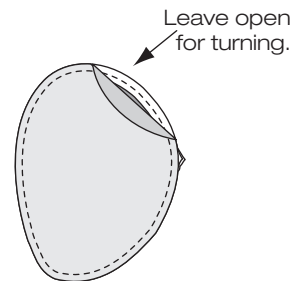


2 Square one end of the bias strip. Fold the squared end 1/2" to the wrong side. Beginning at the crotch, and with right sides together, pin the strip to the perimeter of one elephant body. Trim off any excess strip length, allowing for a 1" overlap. Sew the strip to the body, following the same stitching line you created when sewing the piping.



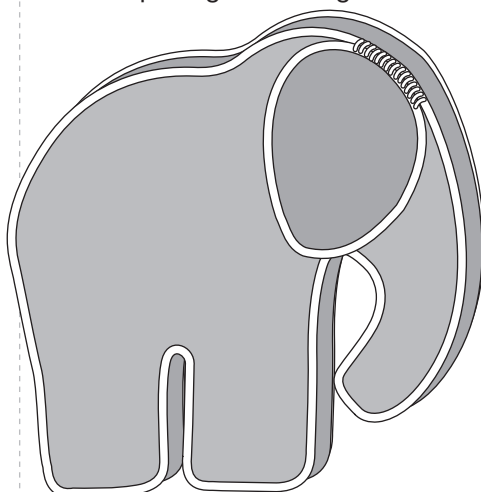
3 Pin, then sew the opposite side of the strip to the remaining elephant body, making sure body pieces align.

4 Turn the pillow right side out through the overlapped opening and use a point turner or other tool to smooth the seams. Stuff the pillow with fiberfill, taking care to push the stuffing into all Eloise's corners and trunk. Hand-sew the opening closed.



5 Following the process in step 1, stitch piping around each outer ear, overlapping ends into the seam.

With right sides together and following the previous stitching line, join each outer ear to an inner ear, leaving a small opening for turning.

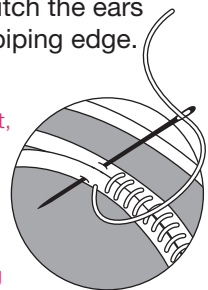


Turn the ears right side out, press, and hand-sew the opening closed.

Position the ears on Eloise's head, with the flatter side of the ear toward the back, and whipstitch the ears into place along the piping edge.

## WHIP STITCH

Working from right to left, bring the needle up through the edge of the ear, then through both the edge of the head and ear. Pull the thread taut and repeat, spacing stitches about 1/8" apart.



This pattern is owned and licensed by Dear Stella for personal use only and should not be reproduced for sale to any third party. This license ends October 1, 2012 and the pattern may not be used or reproduced for any purpose after that date.

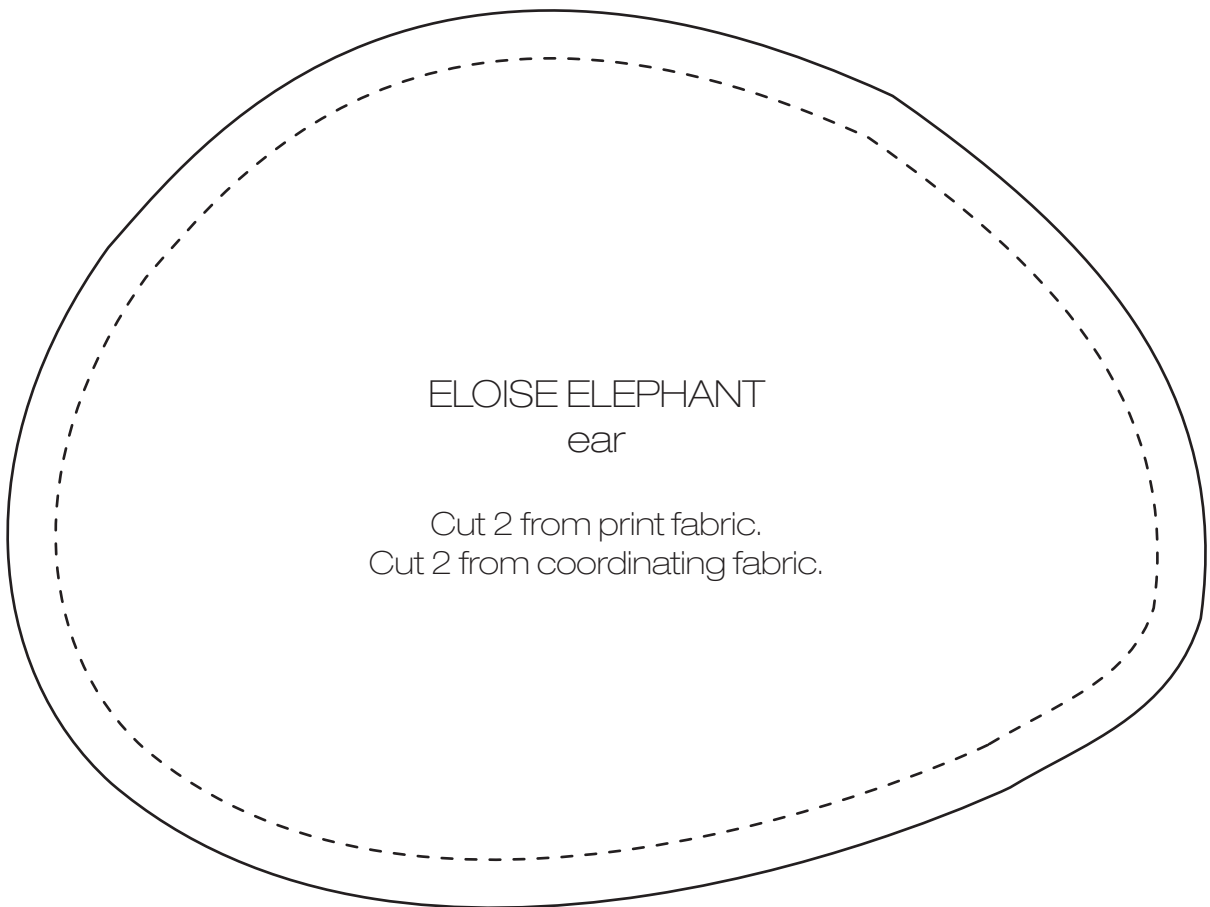
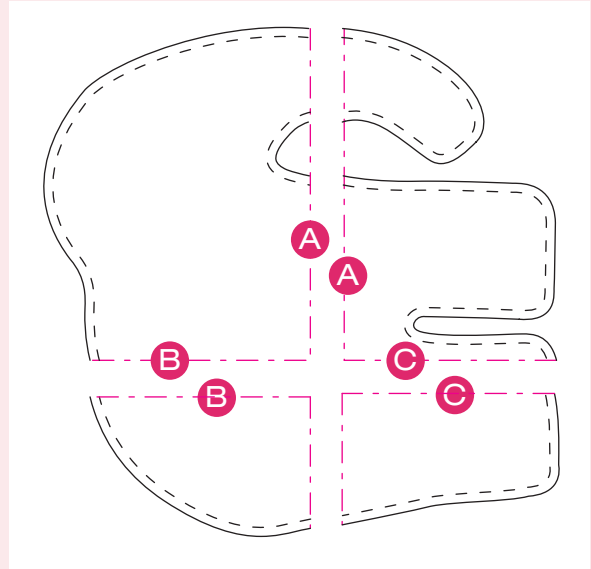
## PATTERN KEY

Follow the pattern key at right to assemble the elephant body pattern, matching and taping sections together along the dot-dash lines, as indicated.

**PLEASE NOTE** When printing patterns, print at 100%. Make sure page scaling is set to "None," and the "Auto-rotate and Center" option is not selected. Check printed pages by measuring the size test square, below:

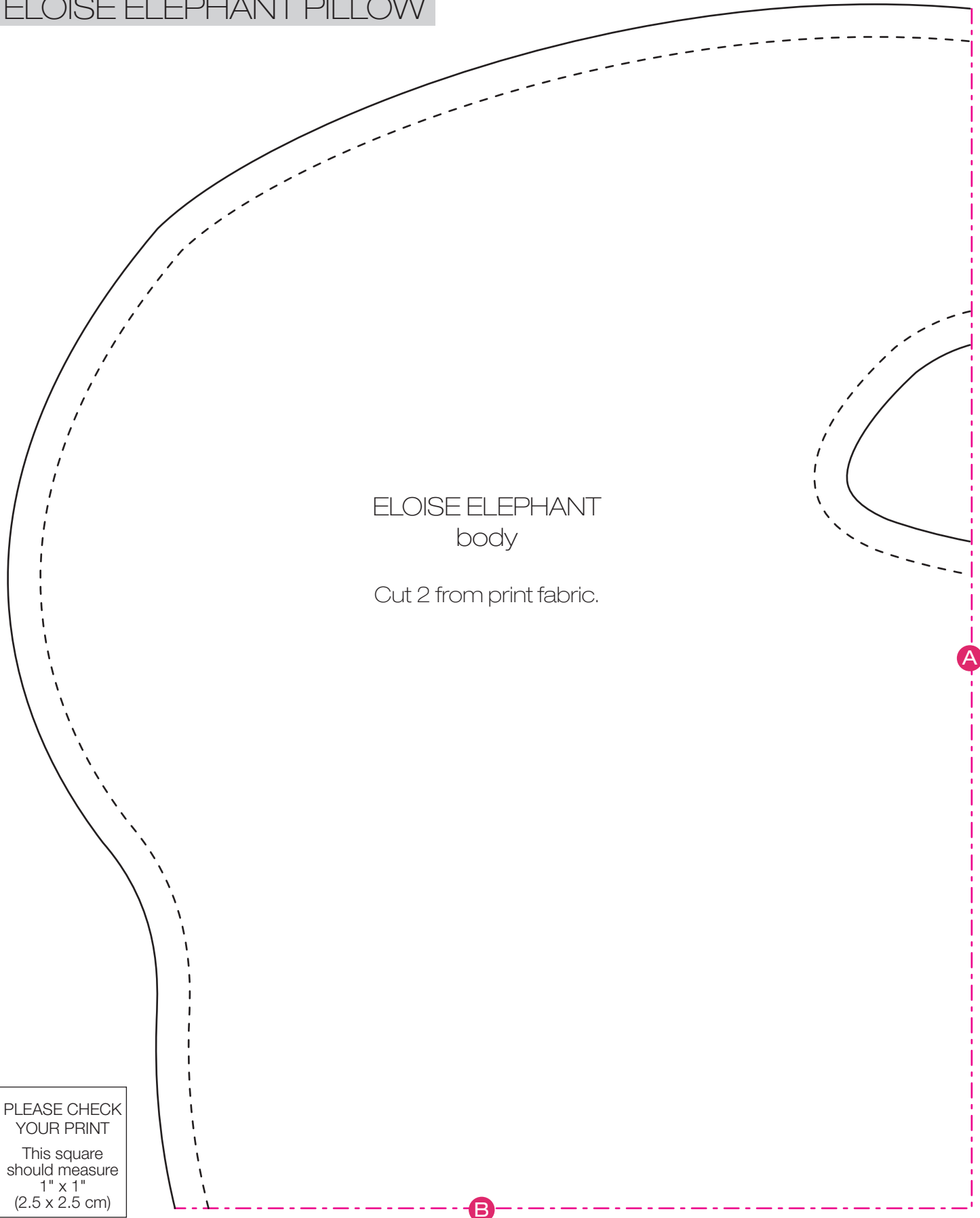
PLEASE CHECK  
YOUR PRINT

This square  
should measure  
1" x 1"  
(2.5 x 2.5 cm)



This pattern is owned and licensed by **Dear Stella** for personal use only and should not be reproduced for sale to any third party. This license ends October 1, 2012 and the pattern may not be used or reproduced for any purpose after that date.

# ELOISE ELEPHANT PILLOW



ELOISE ELEPHANT  
body

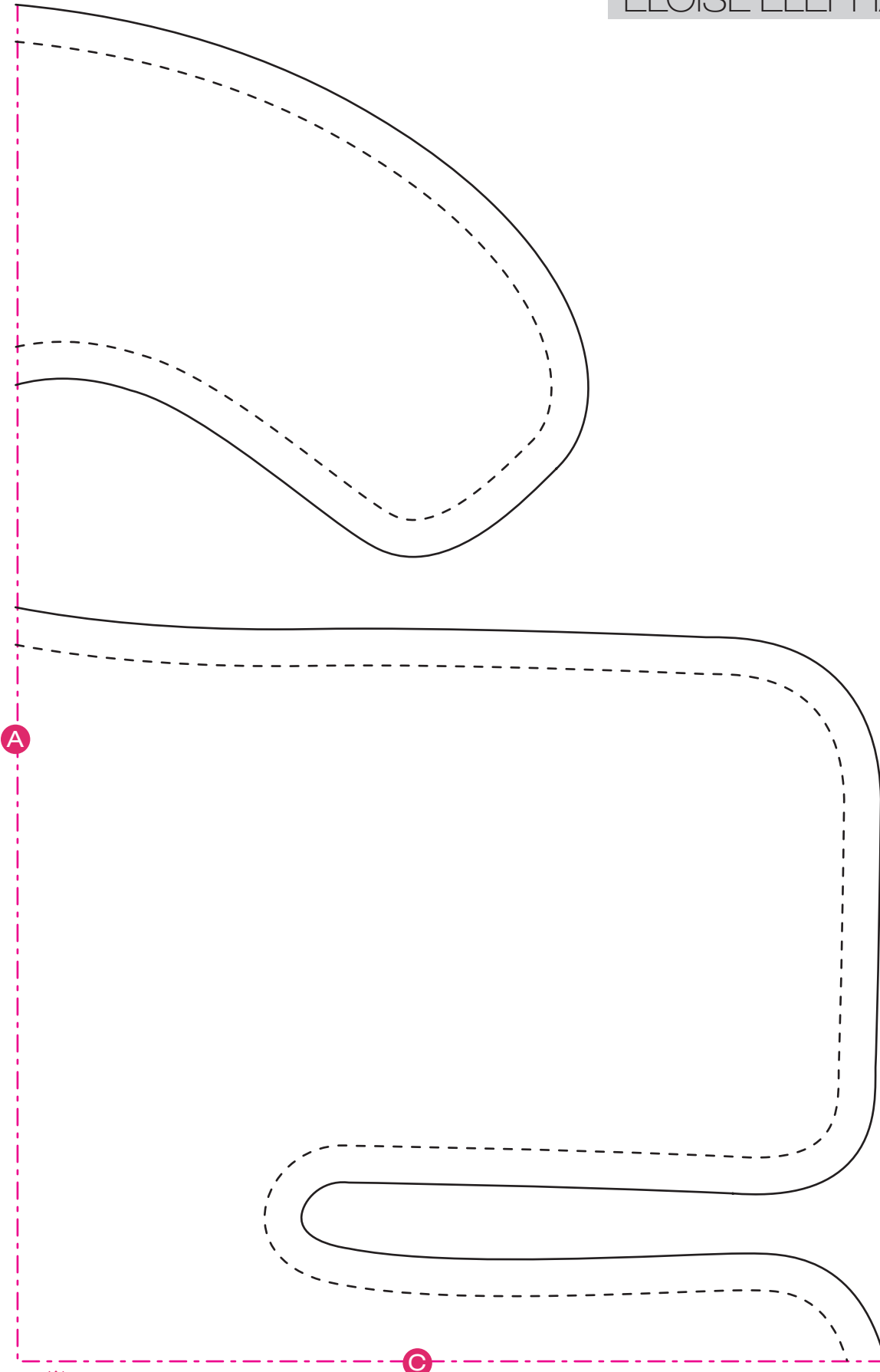
Cut 2 from print fabric.

PLEASE CHECK  
YOUR PRINT  
This square  
should measure  
1" x 1"  
(2.5 x 2.5 cm)



This pattern is owned and licensed by **Dear Stella** for personal use only and should not be reproduced for sale to any third party. This license ends October 1, 2012 and the pattern may not be used or reproduced for any purpose after that date.

# ELOISE ELEPHANT PILLOW

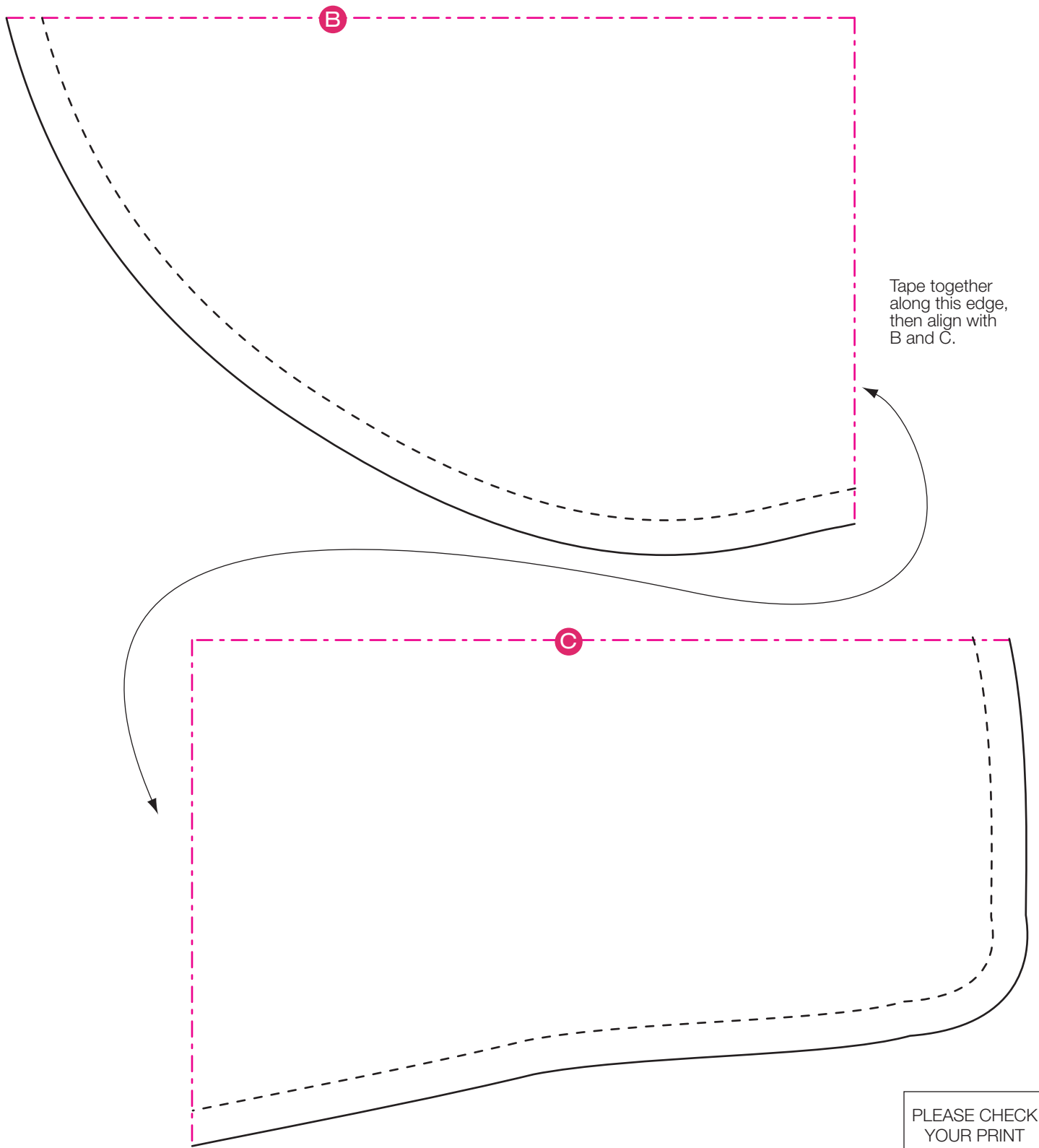


PLEASE CHECK  
YOUR PRINT  
This square  
should measure  
1" x 1"  
(2.5 x 2.5 cm)



This pattern is owned and licensed by **Dear Stella** for personal use only and should not be reproduced for sale to any third party. This license ends October 1, 2012 and the pattern may not be used or reproduced for any purpose after that date.

# ELOISE ELEPHANT PILLOW



Tape together  
along this edge,  
then align with  
B and C.

PLEASE CHECK  
YOUR PRINT  
This square  
should measure  
1" x 1"  
(2.5 x 2.5 cm)



This pattern is owned and licensed by **Dear Stella** for personal use only and should not be reproduced for sale to any third party. This license ends October 1, 2012 and the pattern may not be used or reproduced for any purpose after that date.