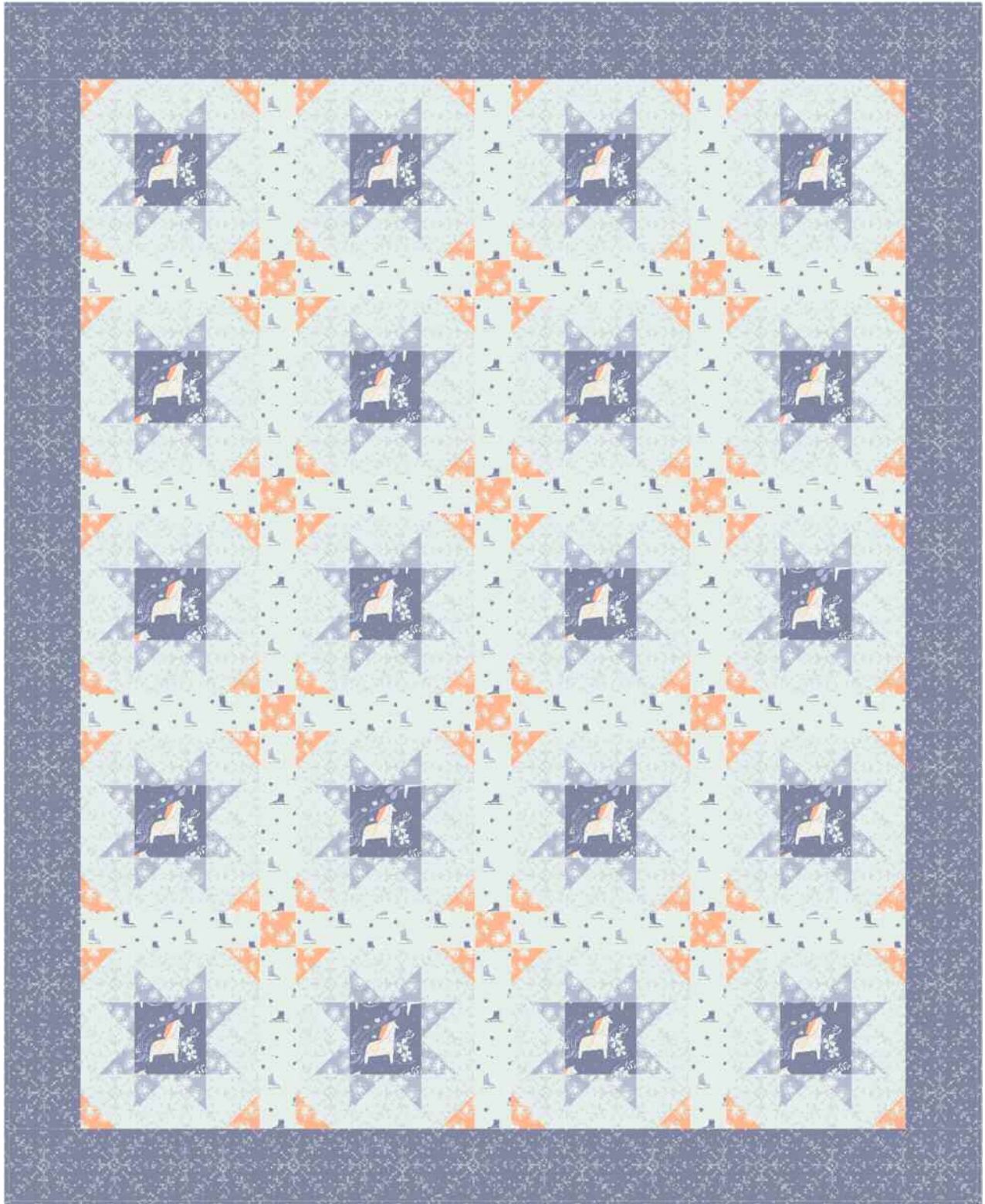


dear STELLA

Rae Ritchie

Dala

"Starry Churn Dash" by Diane McGregor,  
Castilleja Cotton



Size: 54"x66"

483 Broadway, New York, NY 10013  
[www.dearstelladesign.com](http://www.dearstelladesign.com)



Pattern available at  
[www.castillejacotton.net](http://www.castillejacotton.net)

# dear STELLA

Rae Ritchie

Dala

"Starry Churn Dash" by Diane McGregor,  
Castilleja Cotton

Yardage requirements:

3/4 yd star points:

Stella-SRR676 Bluebell

1/2 yd star centers & block corners:

Stella-SRR763 Marlin

Stella-SRR676 Bellini

1 3/4 yds background:

Stella-SRR765 Glacier

7/8 yd sashing:

Stella-SRR764 Glacier

1 3/8 yds borders & binding:

Stella-SRR765 Marlin

3 1/2 yds backing of your choice

