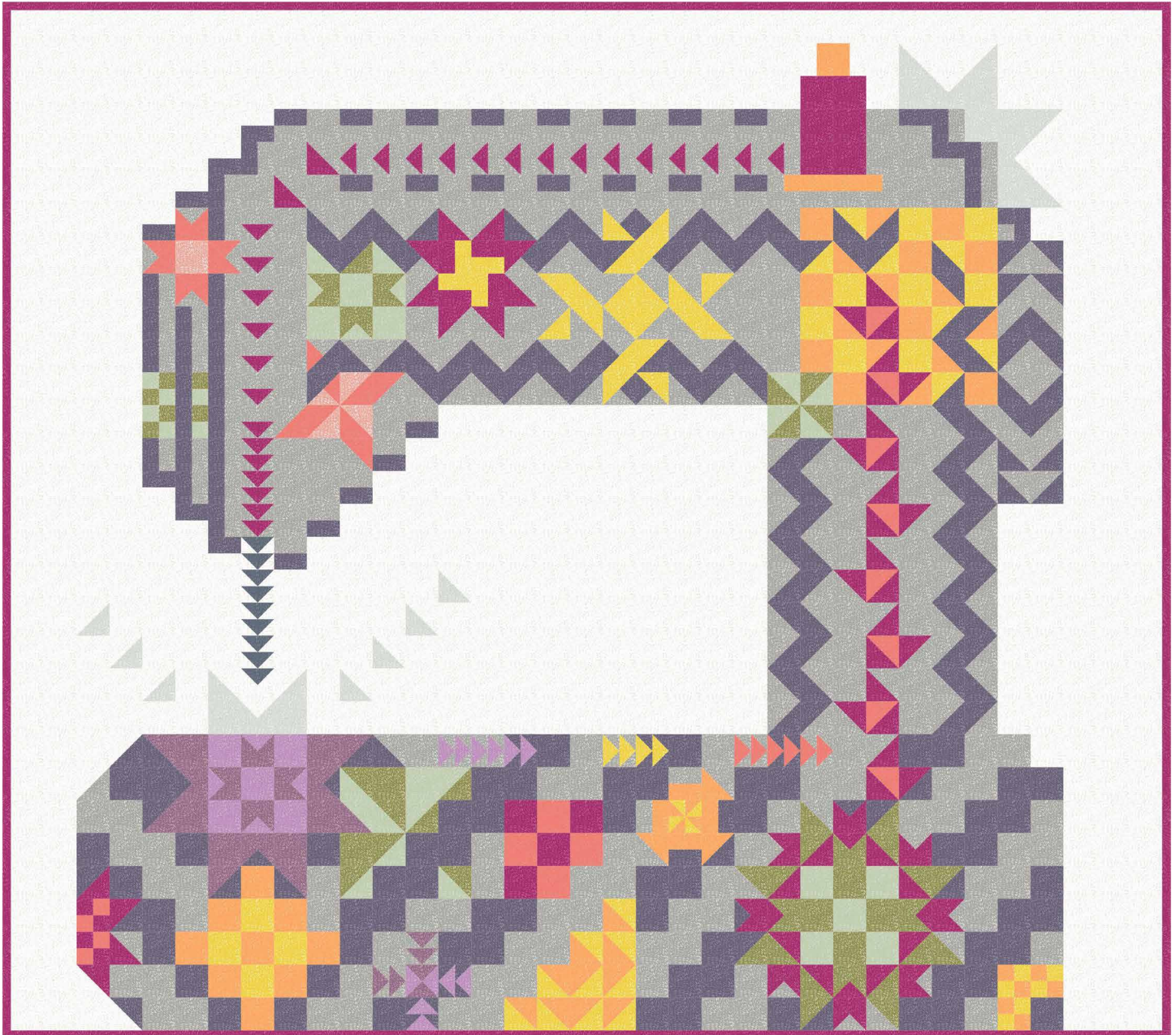


dear STELLA

Rae Ritchie

Dash Flow Basic

Sew Big or Go Home by Kelli Fannin



63" x 71"

483 Broadway, New York, NY 10013  
www.dearstelladesign.com



Pattern available from  
rnkelli@aol.com  
www.kellifanninquilts.com

Yardage Requirements:

Stella-SRR1300 Papyrus	2 1/8
Stella-SRR1300 Murmur	1/4
Stella-SRR1300 Flint	1 3/8
Stella-SRR1300 Parfait	1/8
Stella-SRR1300 Daffodil	1/4
Stella-SRR1300 Peach	1/4
Stella-SRR1300 Lavender	1/4
Stella-SRR1300 Nectar	1/4
Stella-SRR1300 Grape	7/8
Stella-SRR1300 Raspberry <i>Includes 5/8 yd binding</i>	1 3/8
Stella-SRR1300 Moss	1/4
Stella-SRR1300 Sage	3/8
Stella-SRR1300 Denim	1/8
Stella-SRR1300 Violet	1/8
Backing	4 1/4

